



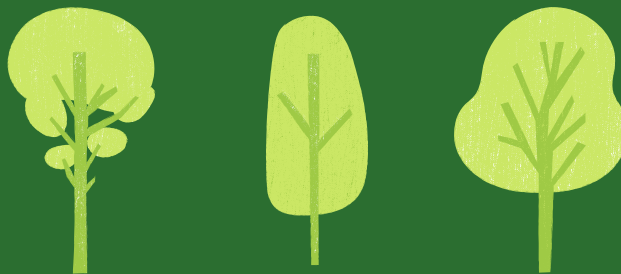
Understanding How Stormwater Affects the Environment

All stormwater drains
lead to the Gulf of
Mexico.

Use Rain Barrels: Collect rainwater from rooftops in mosquito-proof containers. This water can then be used for your lawn or flower beds. If possible, rain from rooftops should be diverted to vegetated areas rather than the stormwater system. Native plants can provide a natural place for rainwater to soak into the ground.



To learn more about protecting our local environment visit www.venicegov.com/government/engineering-stormwater/additional-links. The Environmental Protection Agency also has additional information at www.epa.gov/.



Keep Ditches Clean: Dumping anything into the ditches, inlets, drains, or streams is an illicit discharge and a violation of City Code Section 74-266. If you see any illicit discharge or debris clogging the stormwater system, please call (941)882-7413.

CONTACT

City of Venice
401 W. Venice Ave.
Venice, FL 34285
Steve Berens, EI
941-882-7413
sberens@venicefl.gov
venicegov.com





Pet waste introduces bacteria and excess nutrients to local waters, so it is important to always pick up after your pet. Proper disposal methods include flushing it down the toilet or throwing it in the garbage. This is especially crucial at Brohard Beach and Paw Park to prevent increased bacteria in the Gulf.

POLLUTION FACTS

Polluted stormwater runoff can cause serious harm to a variety of life, from plants and animals to humans. Since the stormwater system is not connected to the wastewater treatment plant, anything that enters the system ends up in the bay or the Gulf of Mexico. When polluted stormwater enters swimming areas, it poses health risks that may lead to beach no-swimming advisories.

Additionally, plastic bags, bottles, cigarette butts, and other debris can cause fatal choking hazards for ducks, fish, turtles, and other wildlife. Excessive nutrients can cause algae blooms, which can ultimately remove oxygen from the water and create an unsuitable living environment for aquatic life.

Polluted stormwater can even contaminate drinking water sources, which can lead to serious health problems and increase the cost of processing potable water.

POLLUTION SOLUTIONS

Maintaining your car is crucial, but it's also essential to care for the environment. Avoid washing your vehicle in your driveway to prevent detergent from entering the Gulf through the stormwater system. Instead, use a commercial car wash that recycles its wastewater. Ensure your car is free of leaks to prevent polluting aquatic life with fluids like oil and paint. Properly dispose of batteries and fluids at the Sarasota County Chemical Collection Center at 250 S. Jackson Rd. Seal jars of oil and place them at the curb on recycling pickup day.

