

# 2024 HURRICANE EXPO

Kathleen Weeden, City Engineer

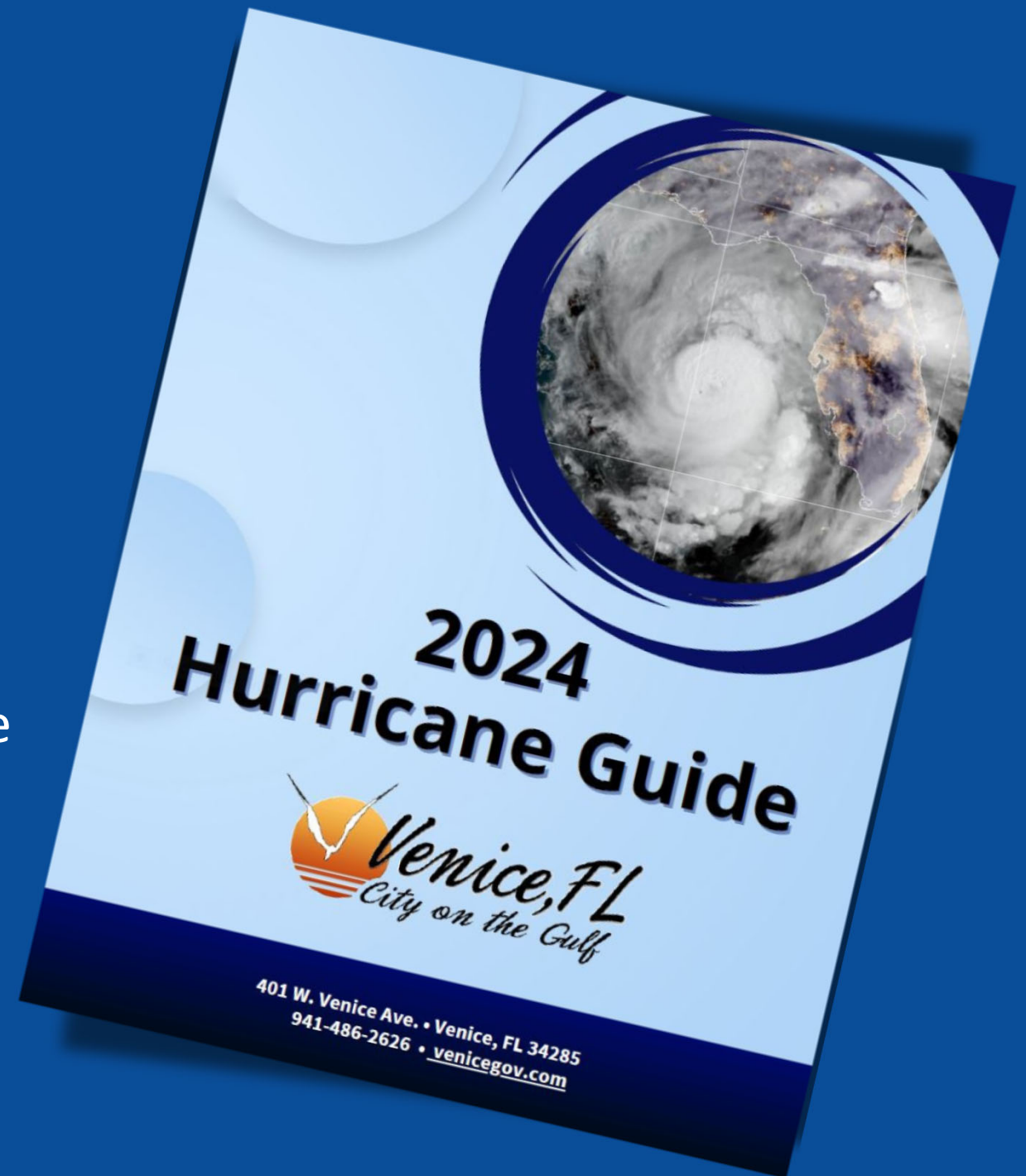


## Hurricane Season:

June 1 through November 30

Obtain the 2024 City of Venice Hurricane Guide for crucial details on actions to take before, during, and after a storm, along with contact details for different agencies.

Plan ahead of the hurricane season to ensure stores are well-supplied with hurricane essentials.





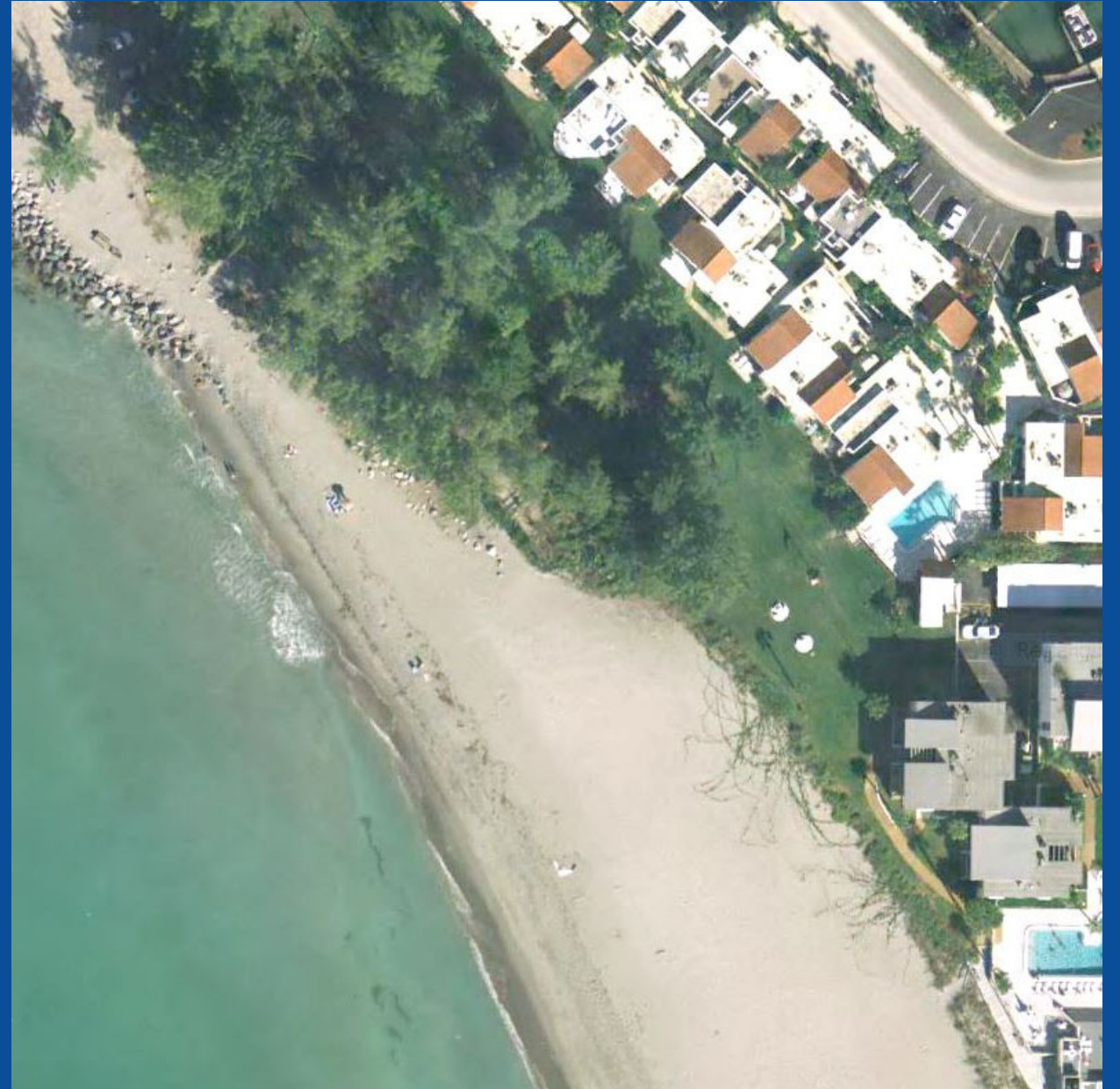
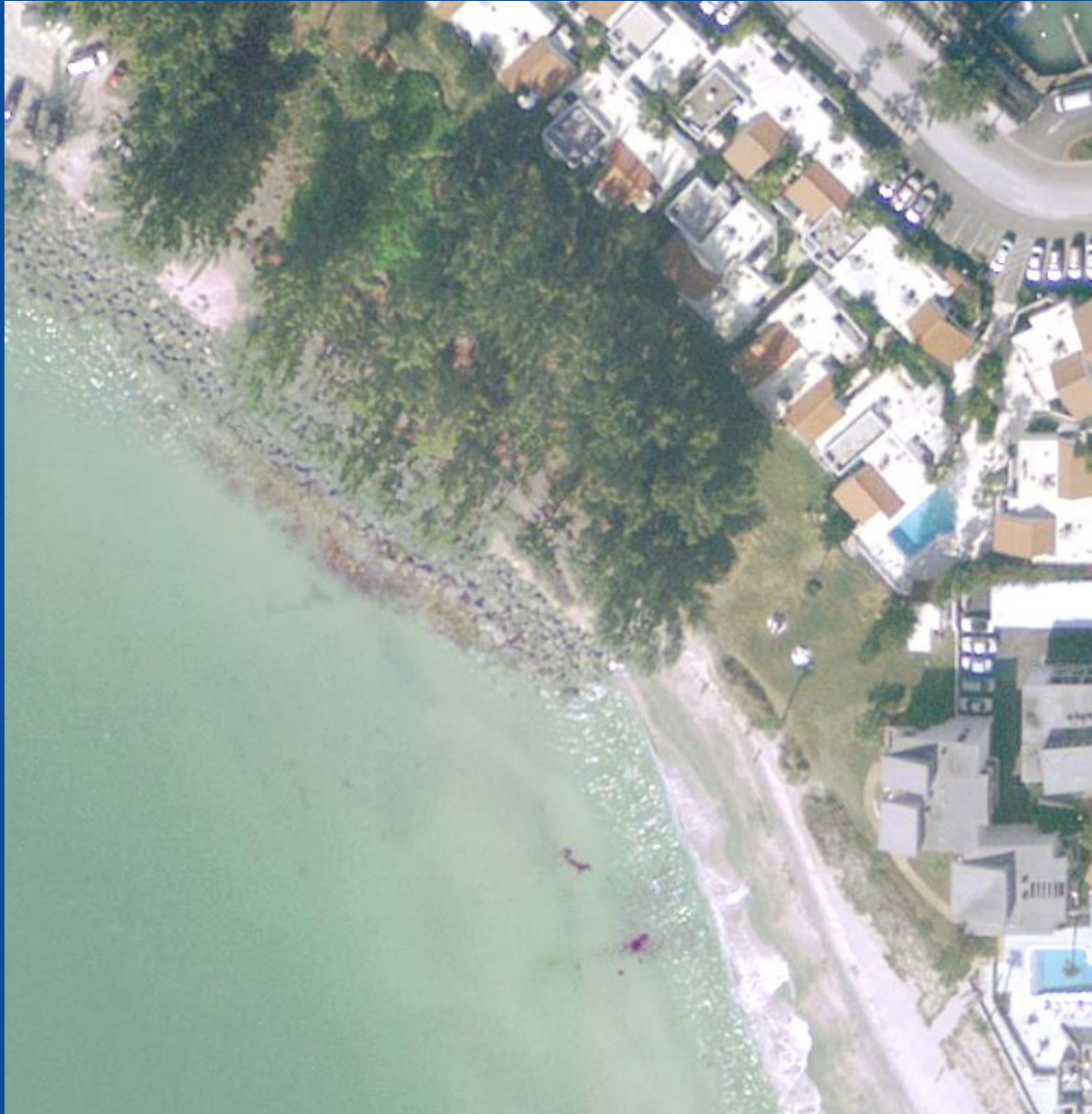
# INITIAL BEACH NOURISHMENT PROJECT

Early 1994



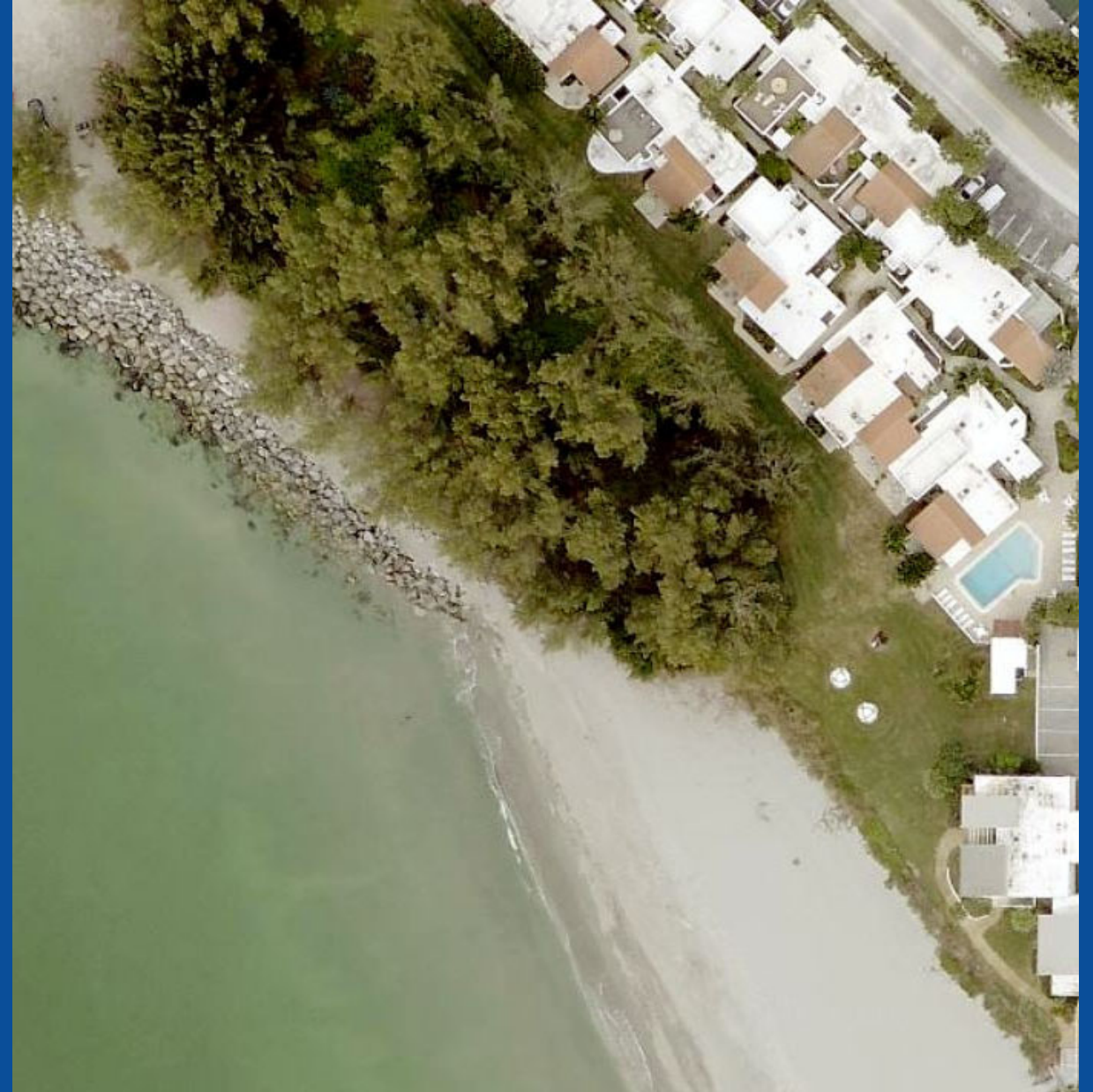
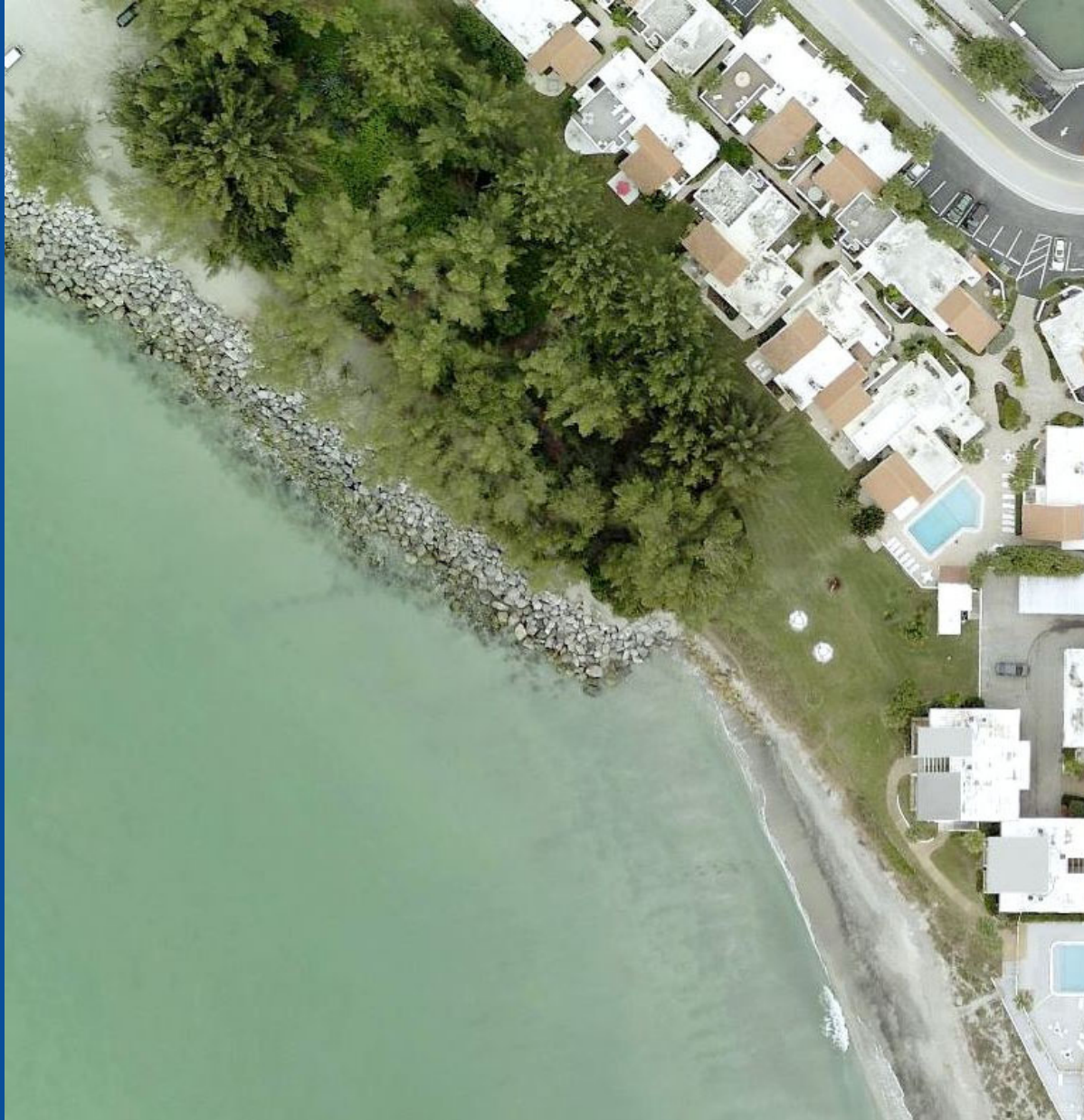


# BEACH RENOURISHMENT PROJECT 2004 VS. 2007





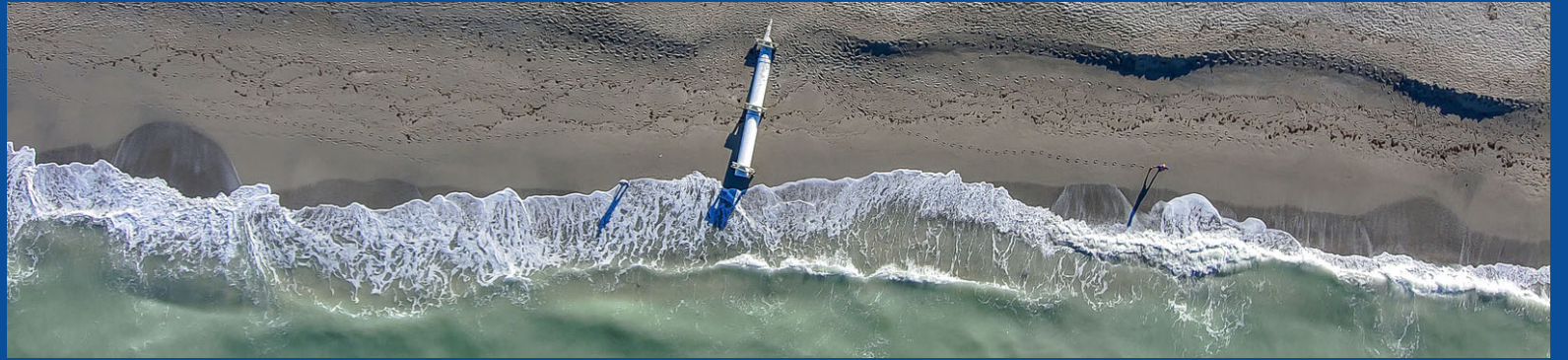
# BEACH RENOURISHMENT PROJECT 2015 VS. 2016





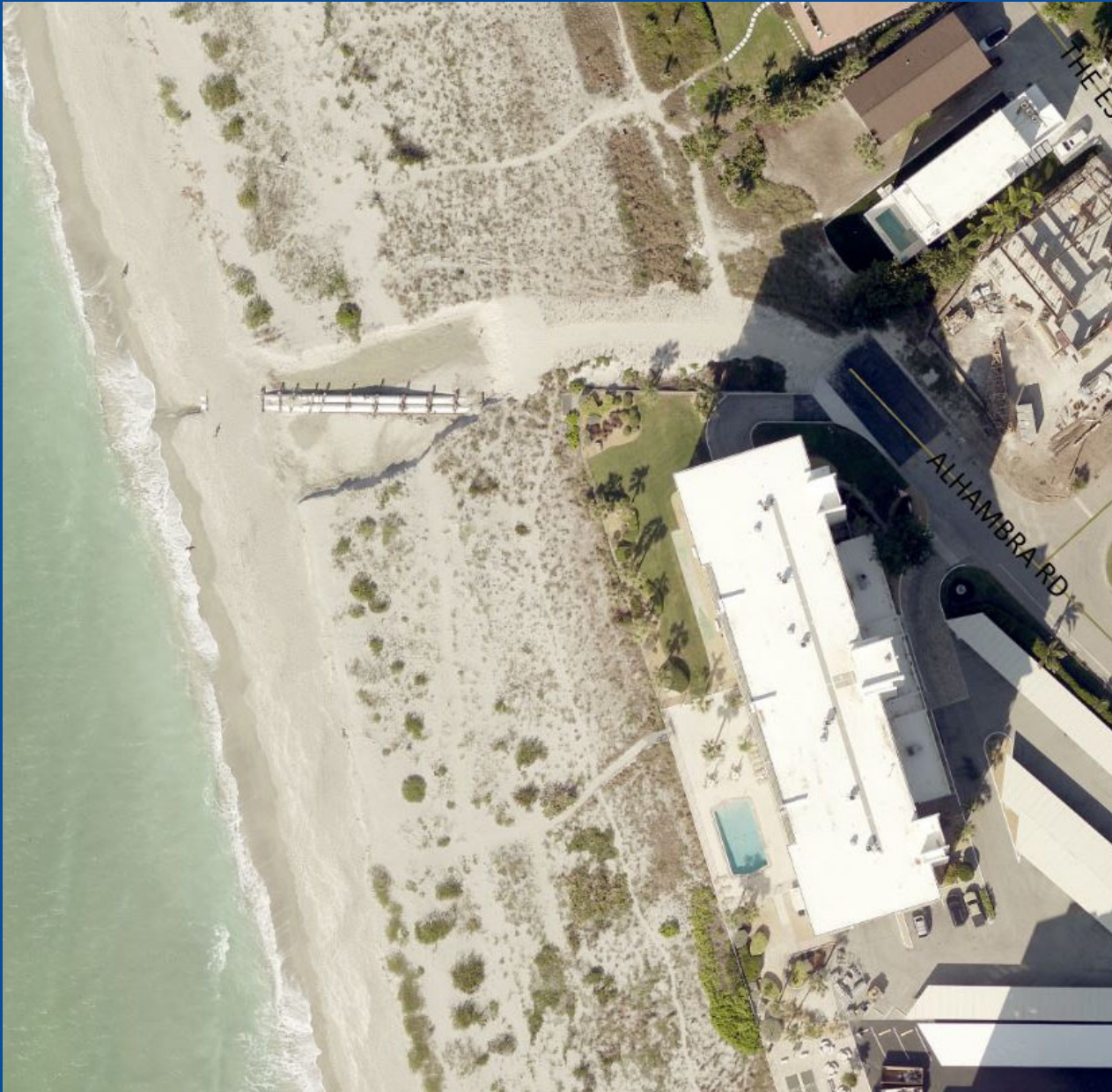
# What is an outfall?

A Stormwater outfall is a point where the municipal separate storm system discharges to the Gulf of Mexico, bays, or streams. All of our stormwater inlets ultimately lead to the Gulf of Mexico.





# OUTFALL #2 ALHAMBRA- BEFORE/AFTER HURRICANE IAN





# LOCAL FLOOD HAZARDS



Coastal Flooding



Storm Surge



# LOCAL FLOOD HAZARDS



Riverine Flooding



Street Flooding



# STORMWATER INLETS



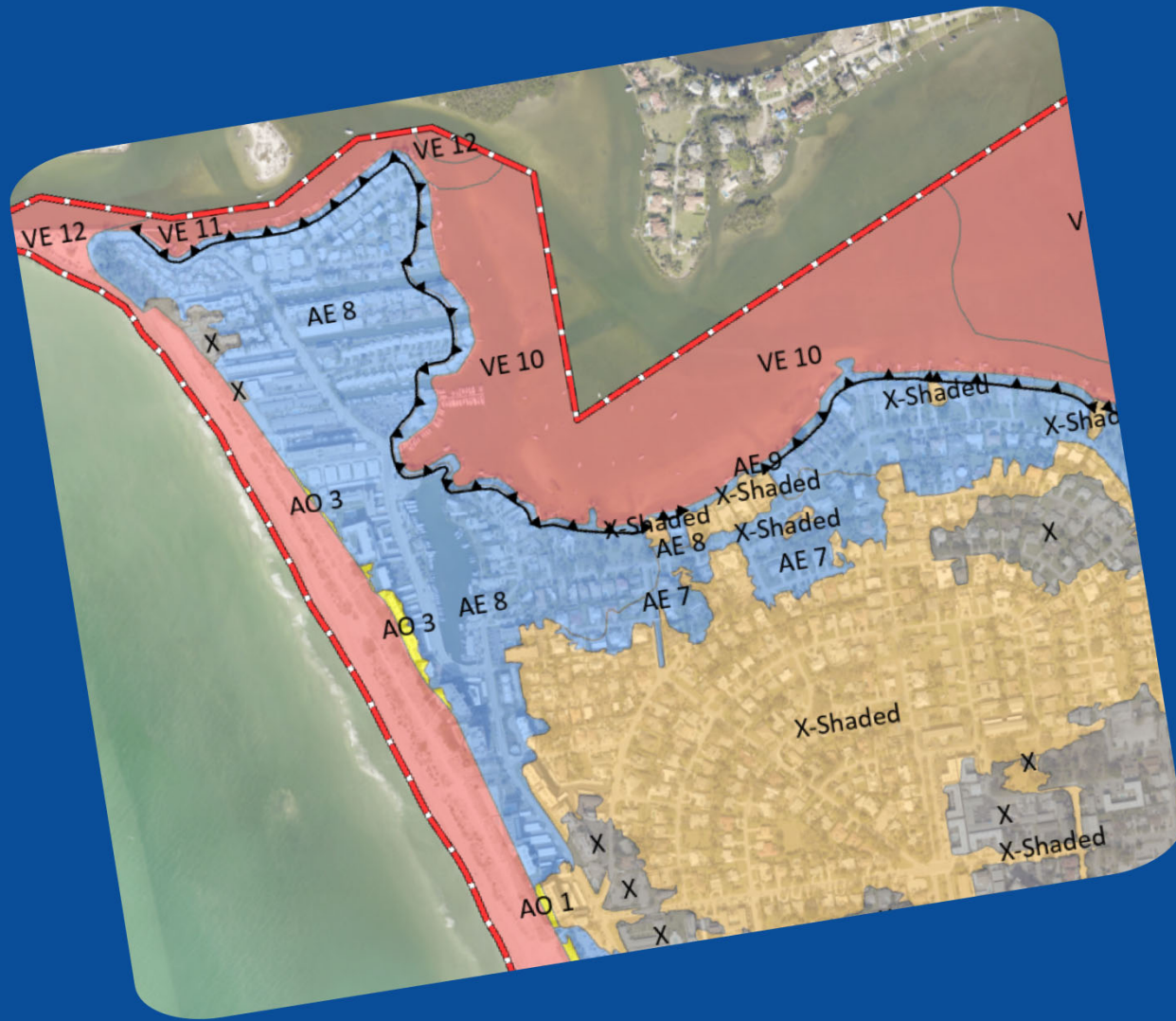
StormWater Inlet Marker

All stormwater drain ultimately lead to the Gulf!

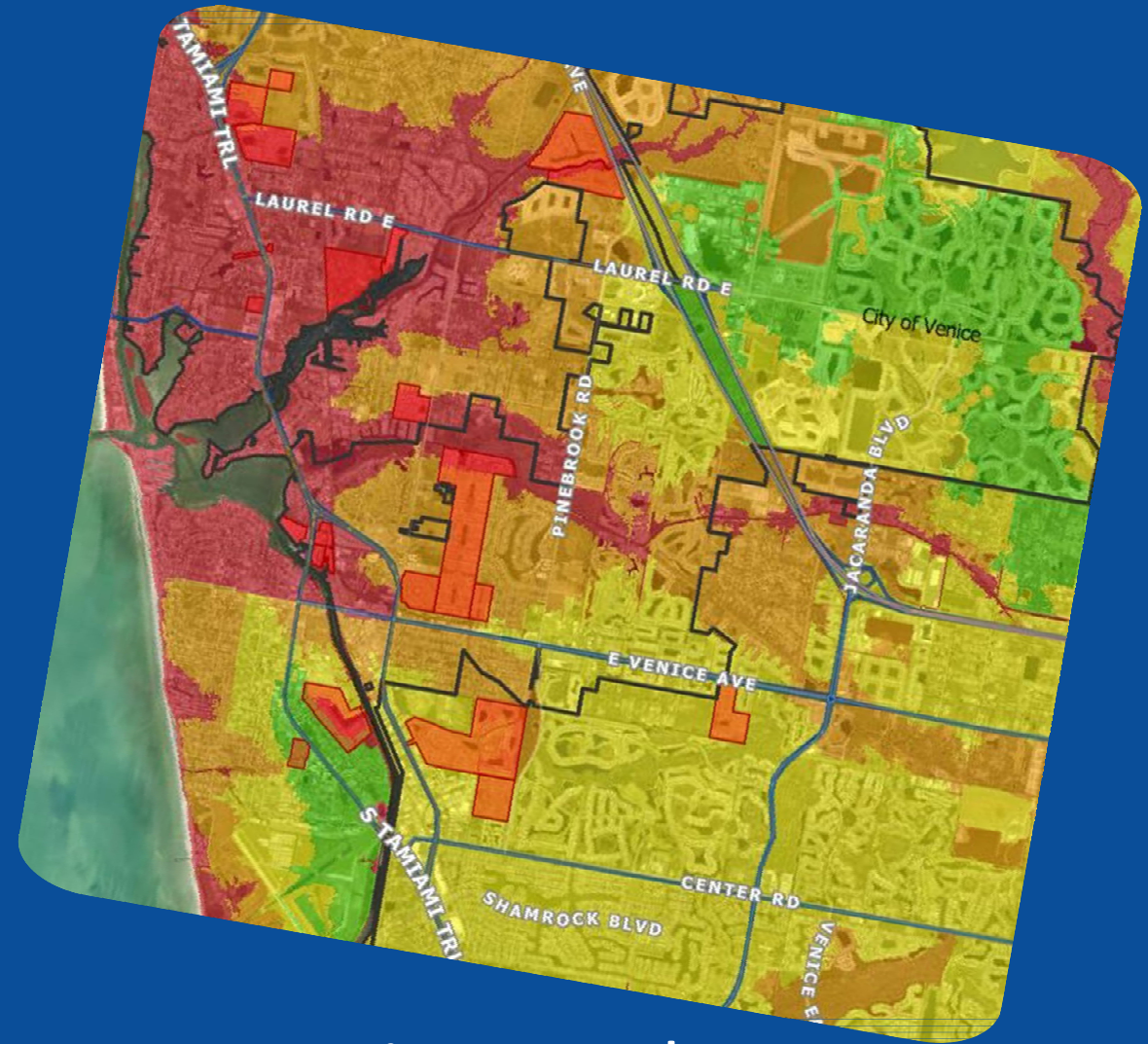
Dumping any illicit substances or debris down the stormwater drain is illegal and pollutes our waterways and the Gulf. Volunteers place markers around the City to help make residents aware. Call Christina Rimes at 941-882-7412 for more information.



# FLOOD ZONES VS. EVACUATION LEVELS

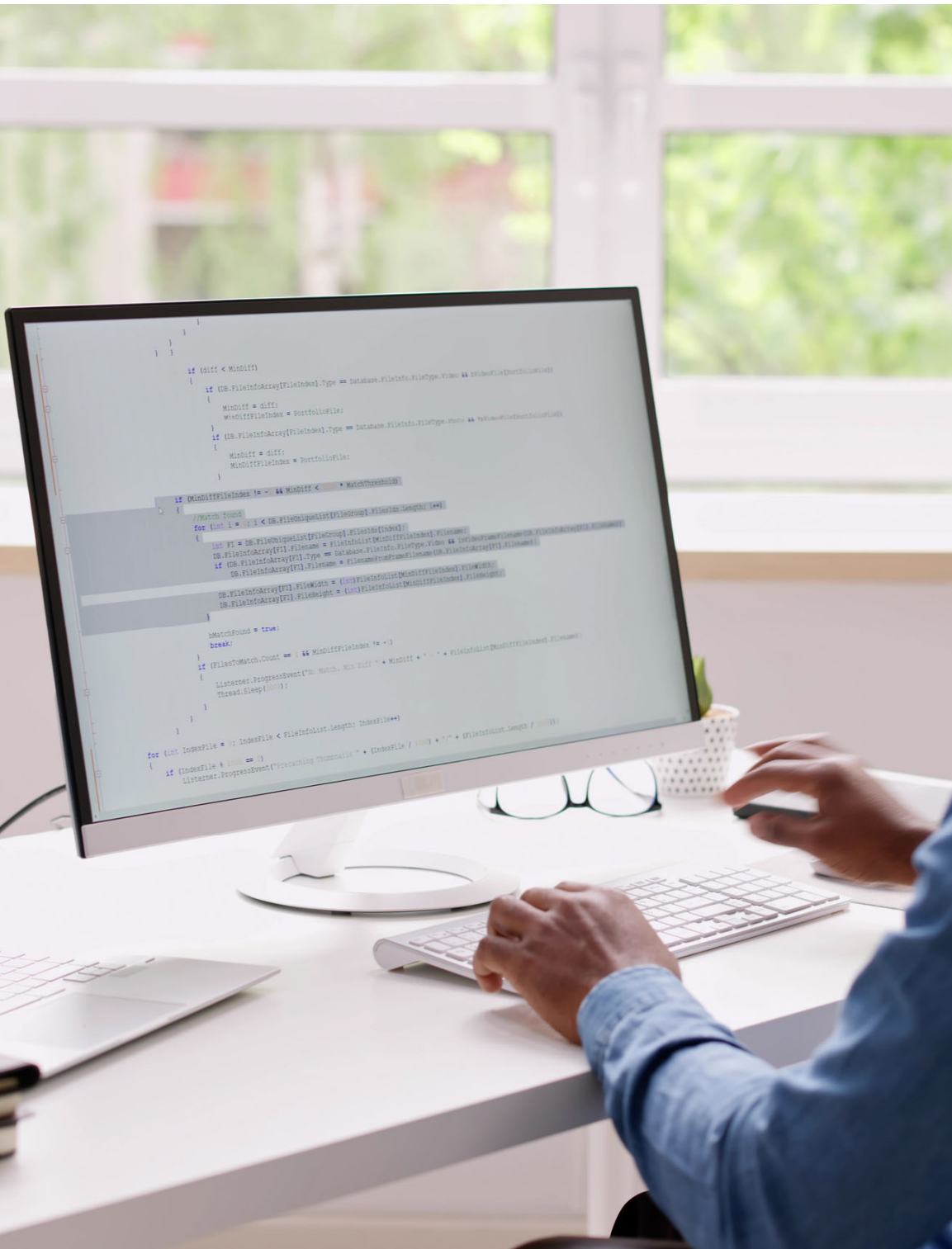


Flood Zone Map



Evacuation Level Map





TALK TO A STAFF  
MEMBER TO FIND OUT  
YOUR FLOOD ZONE OR  
EVACUATION LEVEL.

Visit the City of Venice or Sarasota  
County tables and ask for  
Christina Rimes or Noah Taylor  
after the presentation.



# BE PREPARED

- Build Responsibly
- Elevate your utilities
- Store important documents.
- Place sand or mulch in front of openings.
- Make sure downspouts are clear and directed away from the structure.
- Keep flood vents open and unobstructed.
- Create a family emergency plan including a pet plan!
- Prepare to be self-sufficient for 7 days, as recommended by the Florida Department of Emergency Management.
- Photograph and inventory your belongings.





# BE PREPARED

The majority of Florida falls within a moderate-risk flood zone, and there is not a “no-risk” zone.

Homes in high-risk areas with federally backed mortgages must have flood insurance, though some lenders may require it regardless of the flood zone.

There is a 30-day waiting period for flood insurance.

Residents of the City of Venice benefit from an automatic 20% discount on flood insurance premiums through participation in the Community Rating System. Talk to your agent today!





# FLOOD VS HOMEOWNER'S INSURANCE

## Policy Comparison

### Homeowners:

- Leaking roof (unless due to poor maintenance)
- Burst pipe
- Bath tub overflowing
- Damage to personal property from covered risks
- Water backup from an outside sewer (**typically requires a rider**)



### Flood:

- Structural or foundational damage up to \$250,000 due to flood
- Overflowing inland or tidal waters
- Mudslide damage due to mud being carried by a river or stream of water





# BE PREPARED



Official notification system of Sarasota County



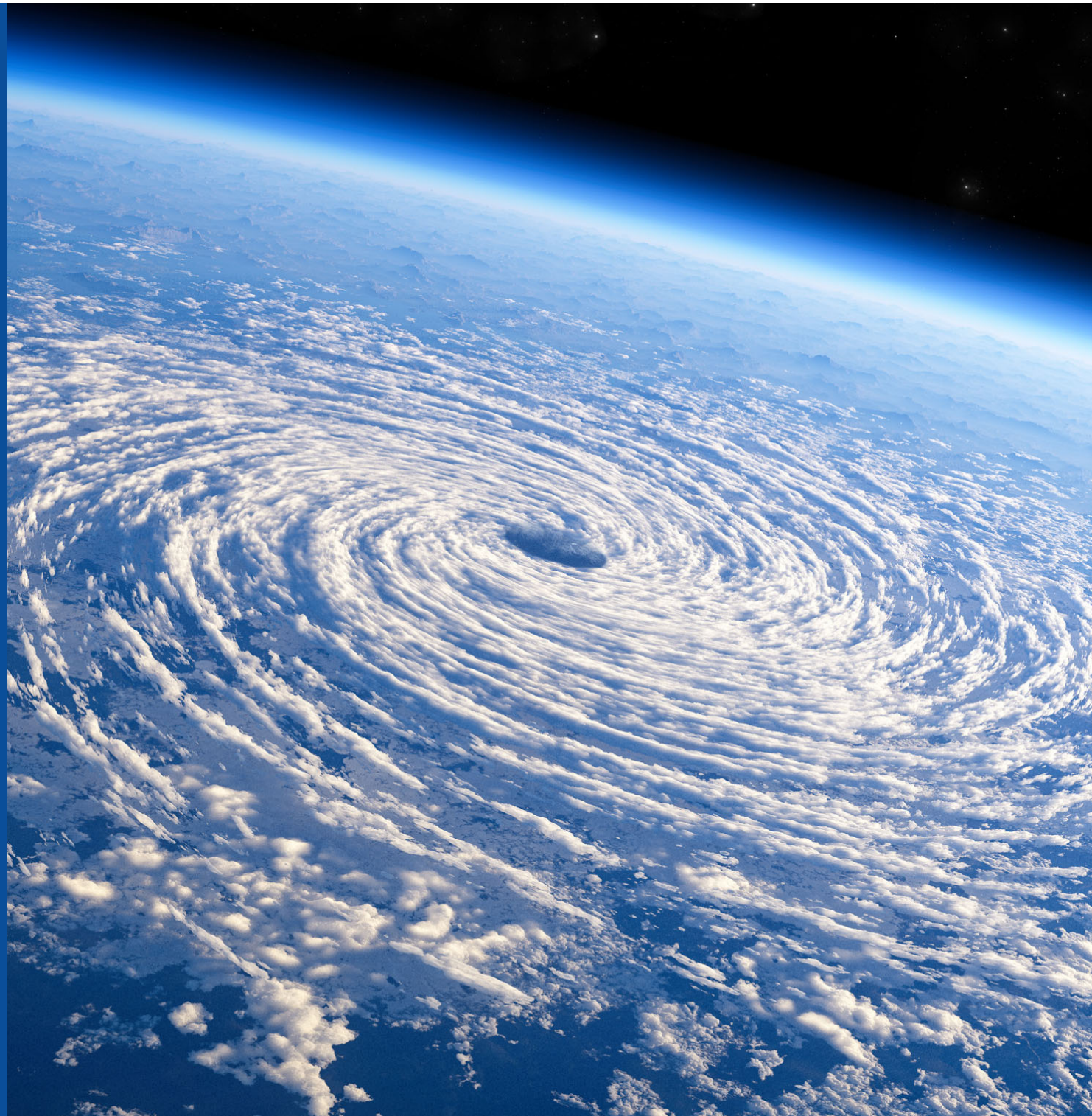
Sign up for AlertSarasota County, the county's mass notification system for rapid emergency updates. This service sends alerts via phone, text and/or email, depending on user preference.

This service sends alerts via phone, text and/or email, depending on user preference. To sign up visit [www.alertsarasotacounty.com](http://www.alertsarasotacounty.com).



# DURING A HURRICANE

- Avoid going outside, especially during the “eye” of the hurricane.
- Keep a safe distance from windows and doors.
- Remember to dial 911 in emergencies, even if first responders are unavailable when winds exceed 45 mph. Calls are logged and handled based on urgency when emergency services resume.







# AFTER A HURRICANE

- Wait for officials to give the all clear before going outside.
- Steer clear of damaged buildings, downed power lines, fallen trees, and resist the urge to go sightseeing.
- Keep generators at least 20 feet away from windows or doors when in use.
- Avoid standing water as it may harbor wild animals or be contaminated.
- Don't leave pets unattended.



# TURN AROUND, DON'T DROWN



6 inches of fast-moving water can knock over and carry away an adult.



12 inches of fast-moving water can carry away a car.



18–24 inches of fast-moving water can carry away SUVs, vans and trucks.





# AFTER A HURRICANE

- Use an air conditioner or dehumidifier to dry out any buildings.
- Take photos and create a list of damaged or lost items, including their age and value, for the adjuster.
- Notify the City of Venice Utilities Department about any broken utility systems.
- Boil water before using it until the City lifts the boil water notice.





THANK YOU FOR COMING.  
STOP BY THE CITY OF VENICE  
TABLE FOR MORE  
INFORMATION! DOWNLOAD  
A COPY OF THE 2024  
HURRICANE GUIDE BY  
SCANNING THE QR CODE.  
VISIT [VENICEGOV.COM](http://VENICEGOV.COM) FOR  
MORE HURRICANE  
INFORMATION INCLUDING  
THIS PRESENTATION.