



Laurel Road Widening





TIME	AGENDA ITEM
5:30	Introductions and Meeting Details
5:35	Presentation
6:10	Q&A Session
6:30	End of Public Meeting

Please email all questions regarding this project to:

laurelroadpublicmeeting@stantec.com

We hope to answer as many questions, as possible, during this evening, but for any additional questions you may have, we are happy to answer them after the meeting. We do monitor this email closely; our team will get back to you!





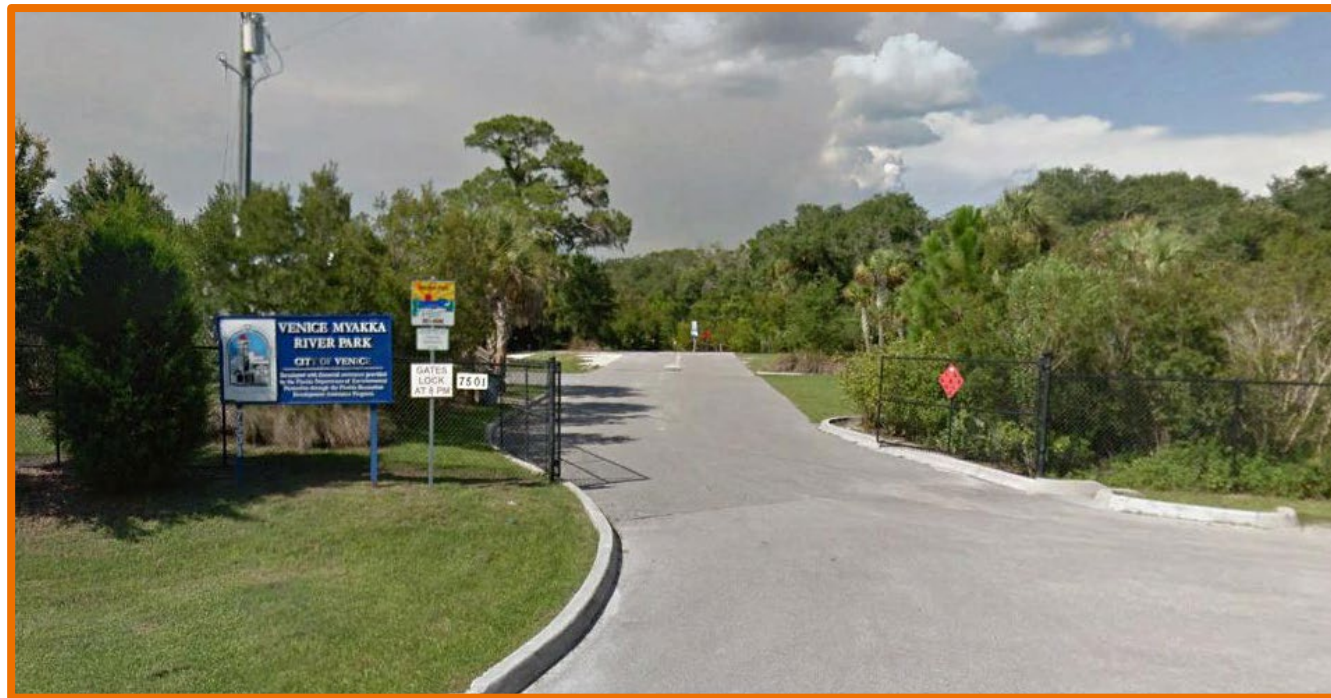
Meeting Format

On behalf of The City of Venice and Sarasota County, Stantec Consulting Services Inc. is hosting a virtual public meeting through a Zoom webinar for the Laurel Road Widening Project (from Knights Trail Road to Jacaranda Boulevard).

Chat function is muted (consistent with County Public Webinars)

We will provide answers to questions pertaining to the road widening; please email questions to:

laurelroadpublicmeeting@stantec.com





Our Team

City of Venice

Kathleen Weeden, PE, CFM, LEED AP
City Engineer
kweeden@venicefl.gov



Sarasota County

Ken Stokes, PE, MBA
Infrastructure Coordination Program Manager
kstokes@scgov.net



Stantec Consulting Services Inc.

Ben Quartermaine, PE
Senior Associate, Design Engineer
ben.quartermaine@stantec.com





Meeting Purpose

- Provide project details
- Share design / permitting schedule
- Answer questions regarding the project



Laurel Road Widening

Please email all questions regarding this project to:

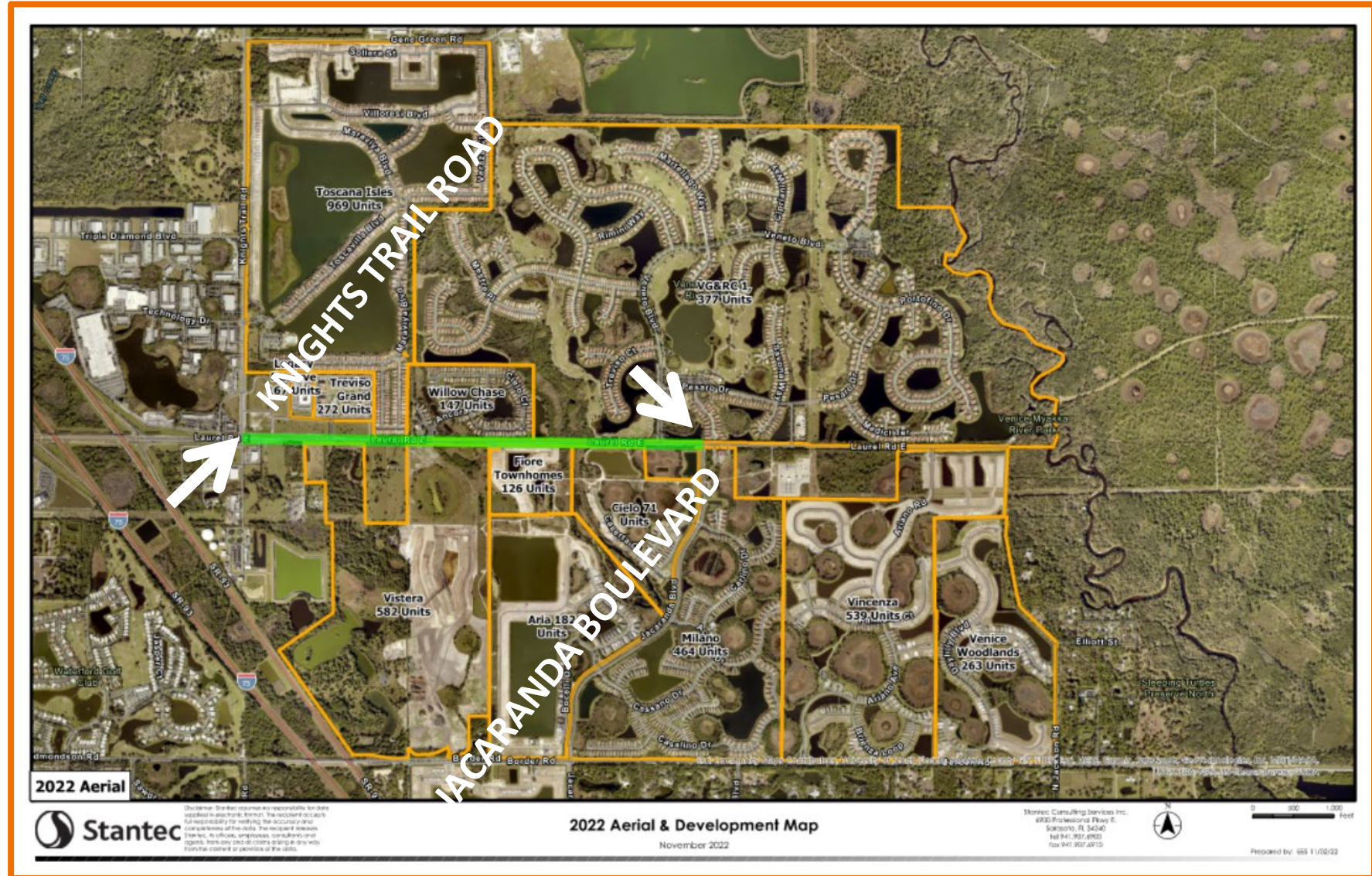
laurelroadpublicmeeting@stantec.com



Knights Trail Road to Jacaranda Boulevard (~1.4 miles)



Project Limits





Project Overview



Please email all questions regarding this project to:
laurelroadpublicmeeting@stantec.com



Project Current Conditions

- 2-lane roadway
- Minimal shoulder
- Inconsistent curbing along roadway
- No stormwater / drainage
- Minimal lighting
- County and FDOT owned roadway within City limits



Please email all questions regarding this project to:
laurelroadpublicmeeting@stantec.com



Project Purpose

Provide capacity to accommodate existing and future traffic.

Design above the 100y24h floodplain to promote safe evacuation.

Consistent with Comprehensive Plan Traffic Circulation Policies

- efficiency of transportation network
- safety of pedestrians and bicyclists

Enhances pedestrian and non-motorist experience; multi-use trail connection between park settings on each end of corridor



Please email all questions regarding this project to:

laurelroadpublicmeeting@stantec.com



Project Info

Joint effort between City of Venice and Sarasota County

- Within City limits
- County and FDOT owned / operated Right of Way

Design is currently at preliminary phase (50%)

**PRELIMINARY PLANS FOR
LAUREL ROAD PRELIMINARY DESIGN**
SECTIONS 26, 27, 34, 35 TOWNSHIP 38 SOUTH, RANGE 19 EAST,
SARASOTA, FLORIDA

THIS CONTRACT PLAN SET INCLUDES
ROADWAY PLANS
SIGNAL PLANS

INDEX OF ROADWAY PLANS

SHEET NO.	SHEET DESCRIPTION
1	COVER SHEET
2	PROJECT LEGENDS
3	DEMOLITION PLAN
4-6	DRAINAGE PLAN
7-8	TYPICAL CROSS SECTION
9	GENERAL NOTES
10	MASTER UTILITY PLAN
11	PROJECT LAYOUT
12-25	PLAN AND PROFILE
26	RIGHT OF WAY NEEDS AND OFFSITE POND MAP
27	POND DETAILS
28	PRELIMINARY PONDS (1 AND 2)
29	PRELIMINARY PONDS (3)
30	PRELIMINARY PONDS (4)

GOVERNING DESIGN STANDARDS:
FLORIDA DEPARTMENT OF TRANSPORTATION, FY 2021-21 STANDARD PLANS FOR ROAD AND BRIDGE CONSTRUCTION AND APPLICABLE INTERIM REVISIONS (IRs).
STANDARD PLANS FOR ROAD AND BRIDGE CONSTRUCTION AND ASSOCIATED IRs ARE AVAILABLE AT THE FOLLOWING WEBSITE:
<http://www.fdot.gov/roadway/DesignStandards/Standards.shtm>

GOVERNING DESIGN SPECIFICATIONS:
FLORIDA DEPARTMENT OF TRANSPORTATION, JULY 2020 STANDARD SPECIFICATIONS (AS AMENDED) FOR ROAD AND BRIDGE CONSTRUCTION AT THE FOLLOWING WEBSITE:
<http://www.fdot.gov/programmanagement/Implemented/Specbooks>

LOCATION MAP

REVISIONS

DATE	BY	DESCRIPTION

LENGTH OF PROJECT PHASE I

	LINEAR FT.	MILES
ROADWAY		
BRIDGES		
NET LENGTH OF PROJ.		
EXCEPTIONS		

ENGINEER'S CERTIFICATION
I HEREBY CERTIFY THAT TO THE BEST OF MY KNOWLEDGE, INFORMATION, AND BELIEF, THAT THE DESIGN OF THIS PROJECT, AS PREPARED UNDER MY PERSONAL DIRECTION AND CONTROL, COMPLIES WITH THE APPLICABLE PORTIONS OF THE "MANUAL OF UNIFORM STANDARDS FOR DESIGN, CONSTRUCTION AND MAINTENANCE FOR STREETS AND HIGHWAYS" AS ADOPTED BY THE FLORIDA DEPARTMENT OF TRANSPORTATION PURSUANT TO SUBSECTIONS 334.04(10)(G) AND 336.045, FLORIDA STATUTES, THE SARASOTA COUNTY UNIFIED DEVELOPMENT CODE, AND APPROVED ADMINISTRATIVE VARIANCES TO SAID UNIFIED DEVELOPMENT CODE.

ROADWAY PLANS
ENGINEER OF RECORD: _____ P.E. NO.: 57571
BENJAMIN QUARTERMAN, PE _____ DATE _____

NOTE:
THE BENCHMARK DATUM USED FOR THIS DATUM IS NAVD 1988.
ATTENTION IS DIRECTED TO THE FACT THAT THESE PLANS MAY HAVE BEEN ALTERED IN SIZE BY REPRODUCTION. THIS MUST BE CONSIDERED WHEN OBTAINING SCALED DATA. PLANS ARE PLOTTED TO 11" x 17".
THESE PLANS HAVE BEEN PREPARED IN ACCORDANCE WITH AND ARE GOVERNED BY THE STATE OF FLORIDA AND SARASOTA COUNTY DESIGN STANDARDS AND SPECIFICATIONS; EXCEPT WHERE OTHERWISE INDICATED BY SPECIAL PROVISION. THE GOVERNING SPECIFICATIONS SHALL BE: STATE OF FLORIDA, DEPARTMENT OF TRANSPORTATION (FDOT), 2020 DESIGN MANUAL; FDOT JULY 2020 STANDARD SPECIFICATIONS; MANUAL OF UNIFORM MINIMUM STANDARDS FOR DESIGN, CONSTRUCTION AND MAINTENANCE, 2016; MANUAL ON UNIFORM TRAFFIC CONTROL DEVICES AND SARASOTA COUNTY UNIFIED DEVELOPMENT CODE AND ALL OTHER APPLICABLE STANDARDS.

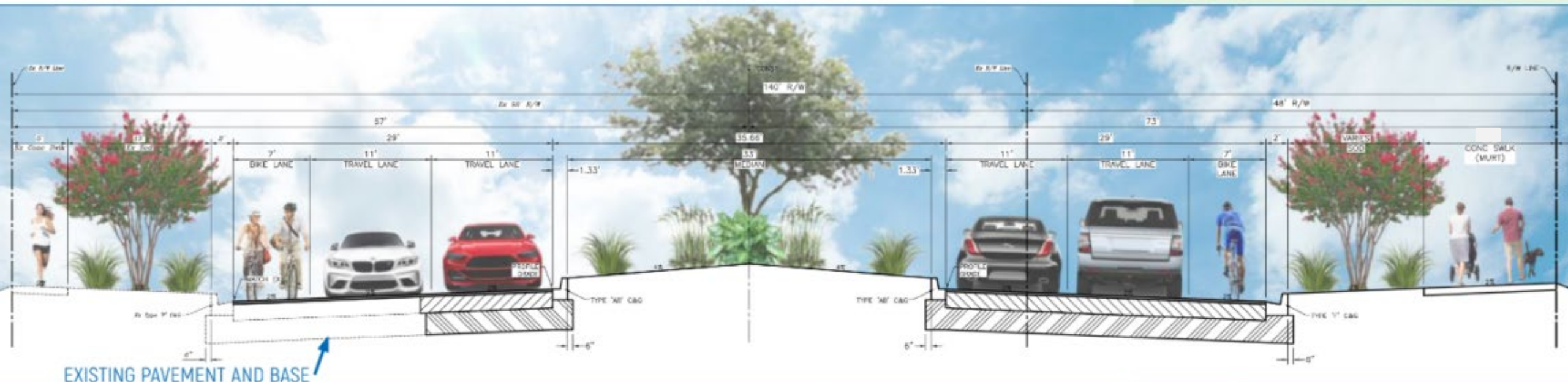
Stantec
6900 Professional Parkway East, Sarasota, FL 34240
Phone 941-907-6900 • Fax 941-366-1922
Certificate of Authorization #27013 • www.stantec.com

Please email all questions regarding this project to:
laurelroadpublicmeeting@stantec.com





Project Typical Section



* Locations/ distances are approximations

Please email all questions regarding this project to:
laurelroadpublicmeeting@stantec.com





Design Elements

Design Consists of:

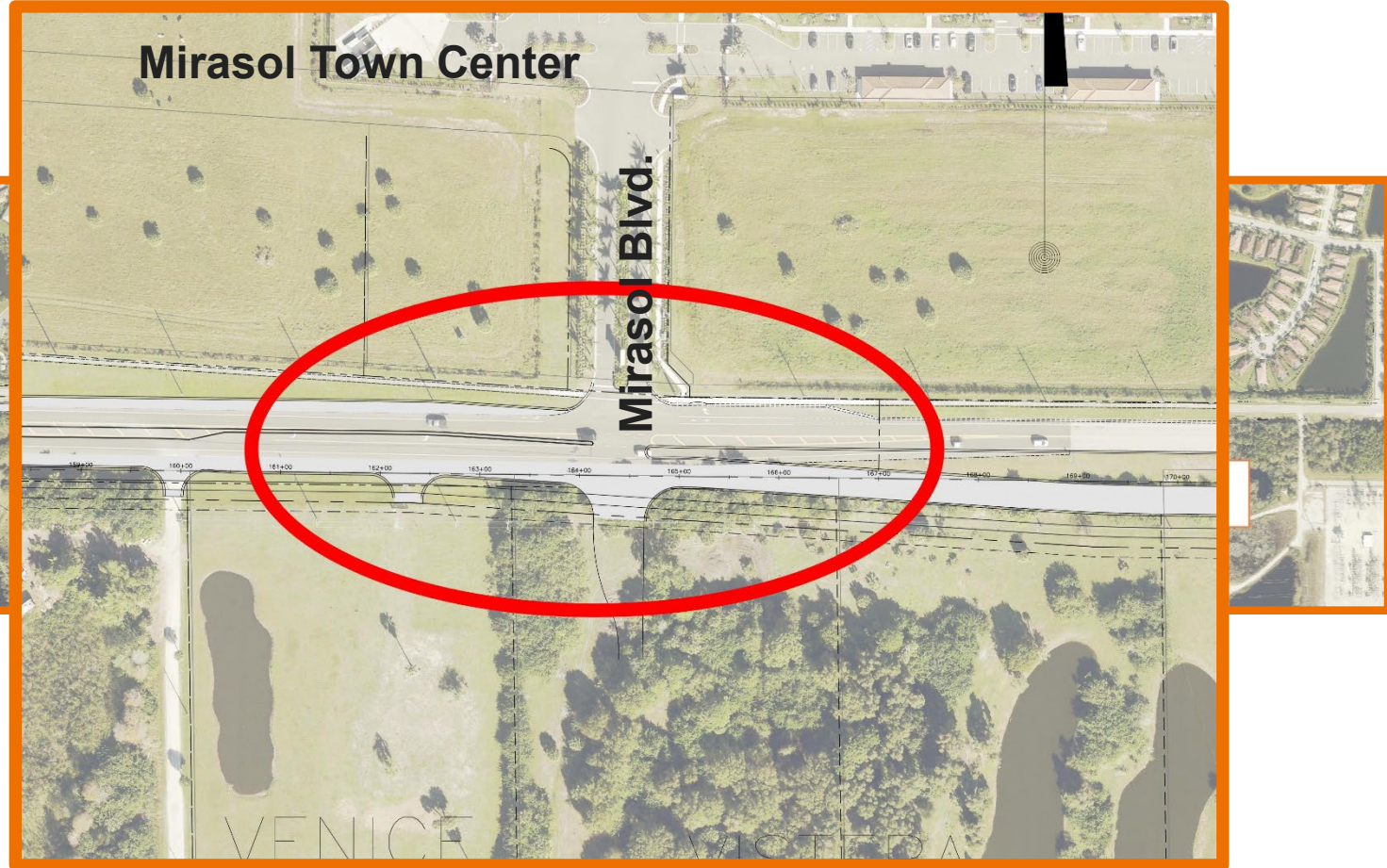
- Widening of Laurel Road from two- to four-lanes
- The installation of:
 - Additional street lighting
 - Sidewalks, bicycle lanes, and multi-use path
 - Landscape median
 - Stormwater treatment / storage
 - Curb and gutter
 - Signalization of Laurel Road / Jacaranda Boulevard intersection
- Some additional right-of-way will be needed to accommodate the improvements.



Please email all questions regarding this project to:
laurelroadpublicmeeting@stantec.com



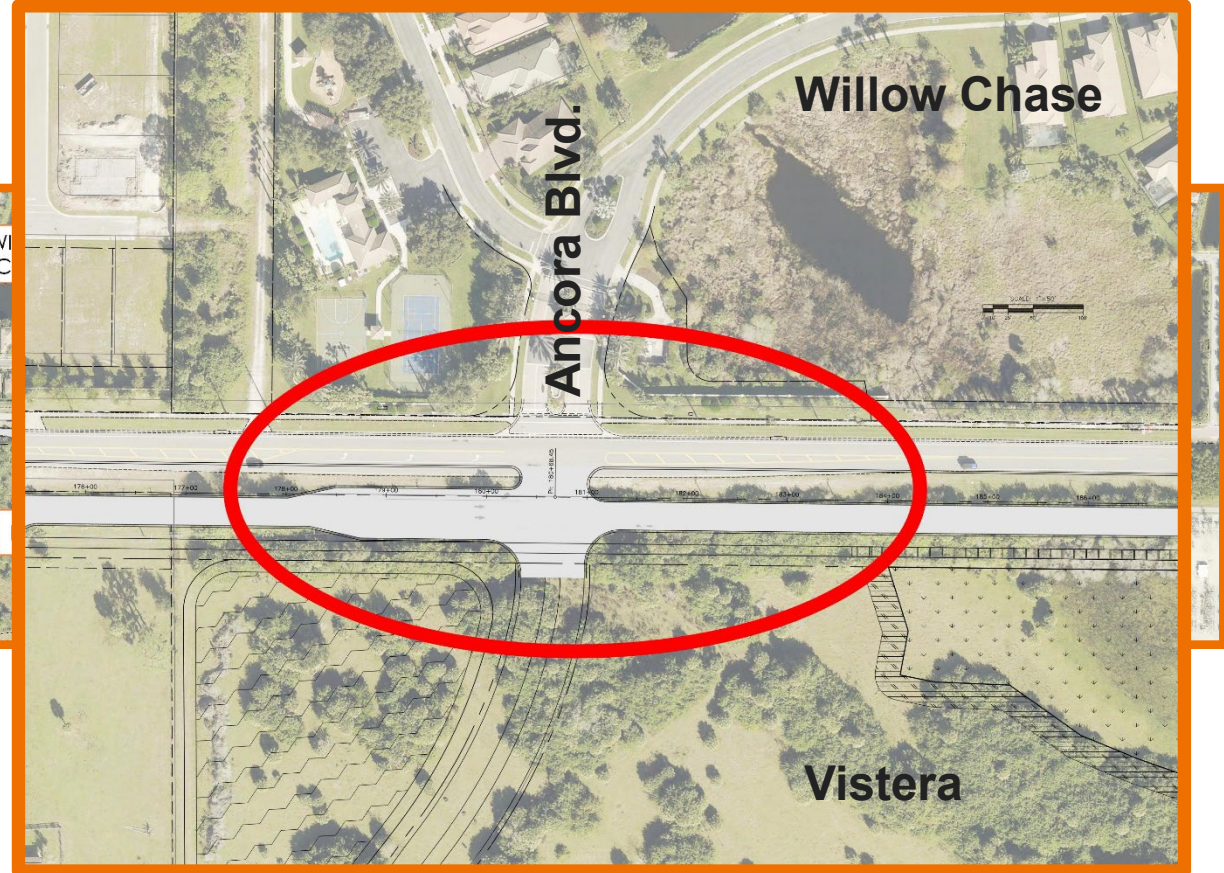
Project Access – Mirasol Blvd.



Please email all questions regarding this project to:
laurelroadpublicmeeting@stantec.com



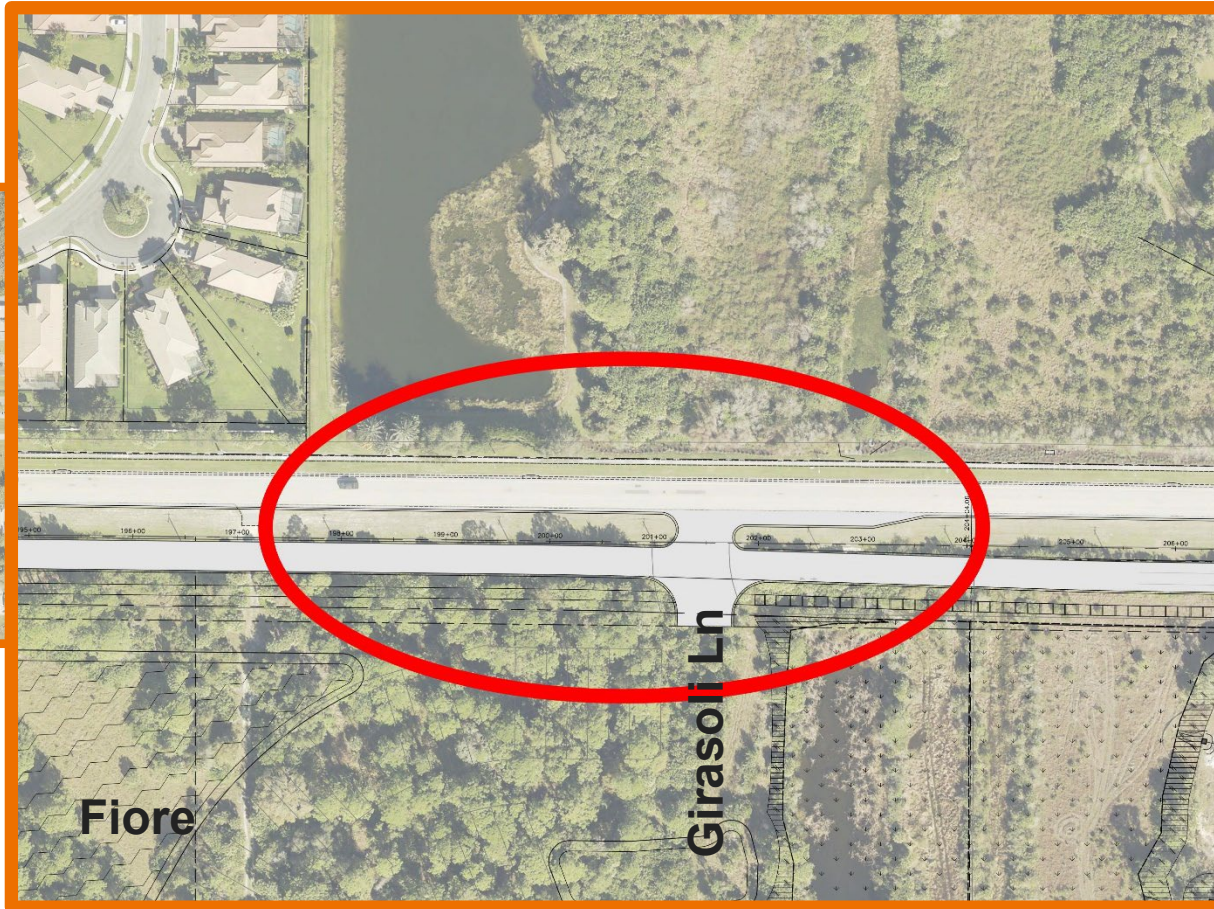
Project Access – Ancora Blvd.



Please email all questions regarding this project to:
laurelroadpublicmeeting@stantec.com



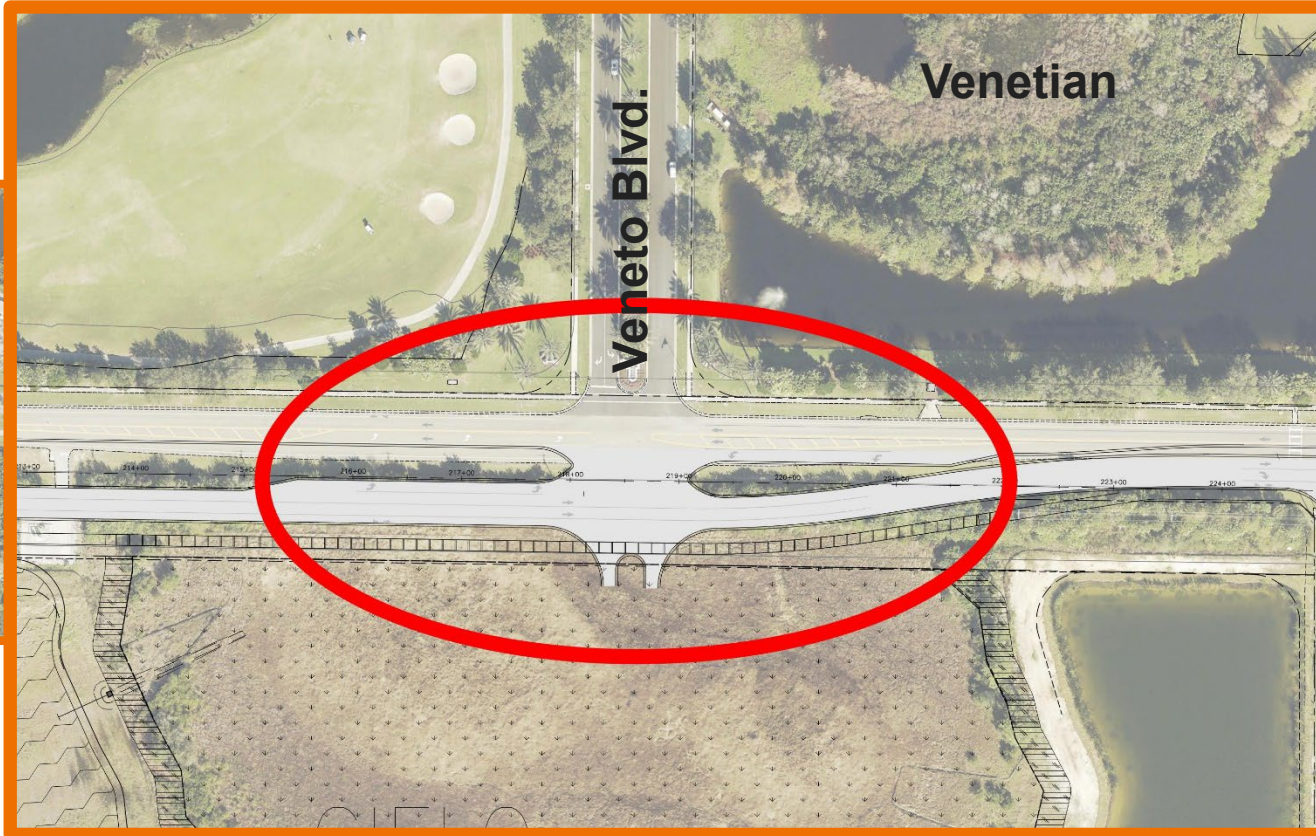
Project Access – Girasoli Lane



Please email all questions regarding this project to:
laurelroadpublicmeeting@stantec.com



Project Access – Veneto Blvd.



Please email all questions regarding this project to:
laurelroadpublicmeeting@stantec.com

Jacaranda Signal

- Intersection access type was coordinated with Fire Station, City and County
- Fire Station emergency signals conflicted with a potential roundabout
- A standard traffic signal was determined to be the most appropriate intersection type at this location



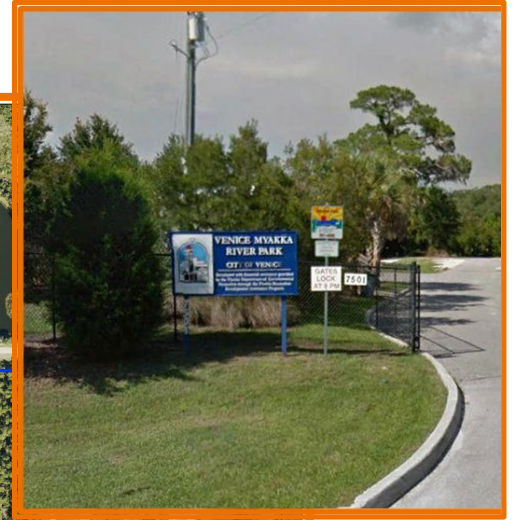
Please email all questions regarding this project to:
laurelroadpublicmeeting@stantec.com



Project Multi-Use Recreational Trail

From Knights Trail to Venice Myakka River Park

- Max 10 feet wide trail
- Park connection
- Paved trail with shoulders
- Adjacent lighting for safety

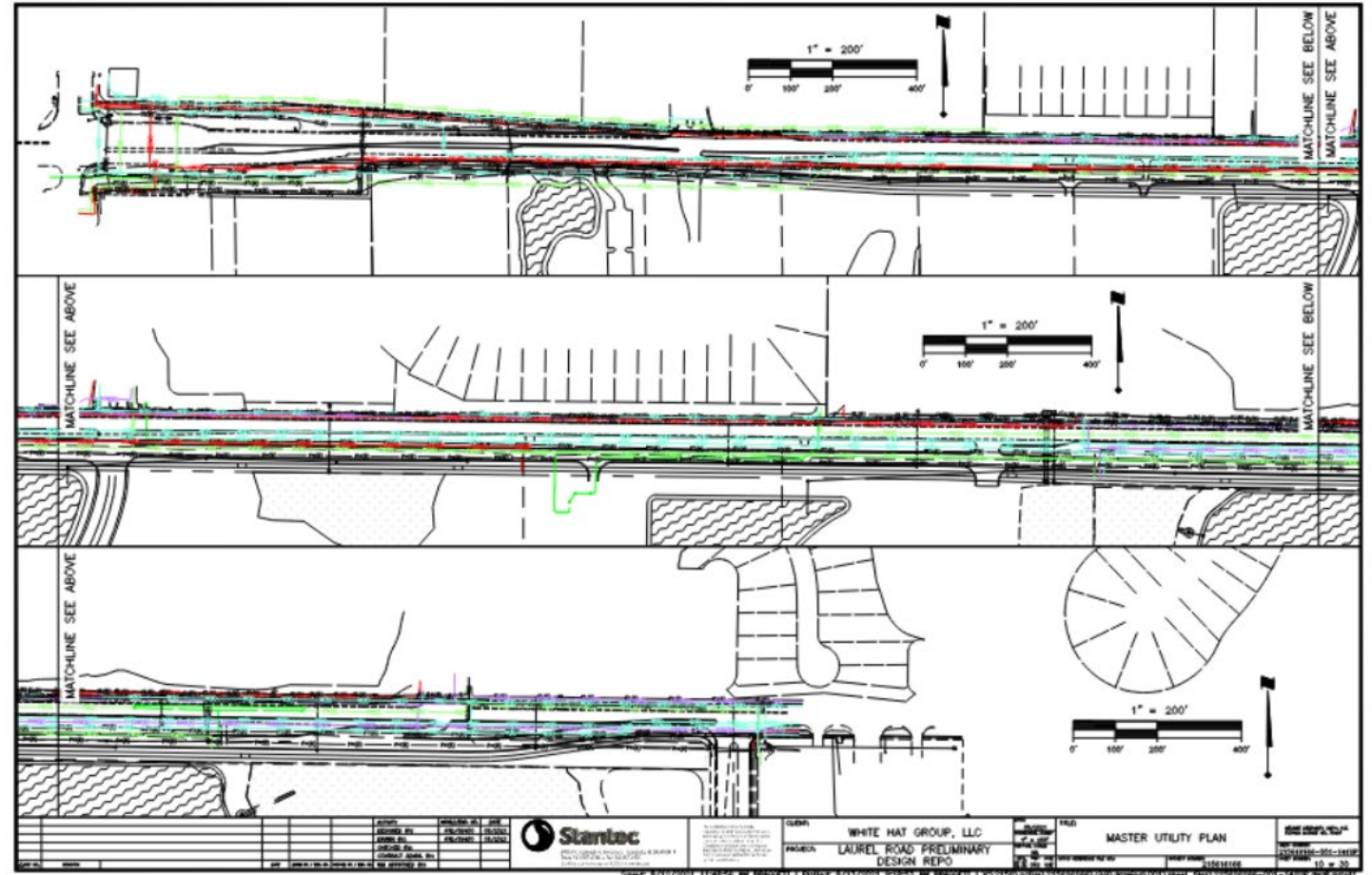


Please email all questions regarding this project to:
laurelroadpublicmeeting@stantec.com



Project Permitting

- City of Venice
- Sarasota County
- Southwest Florida Water Management District (SWFWMD)
- Florida Department of Transportation (FDOT)
- Florida Department of Environmental Protection (FDEP)



Please email all questions regarding this project to:
laurelroadpublicmeeting@stantec.com





Project Timeline

Public Meeting

November 15, 2022

Permit Submittal

November 2022

Southwest Florida Water Management District

December 2022

City of Venice / Sarasota County

Florida Department of Transportation

Florida Department of Environmental Protection

Construction Workshop

May 2023

Final Construction Plans

June 2023



Please email all questions regarding this project to:

laurelroadpublicmeeting@stantec.com



Questions?

**PRELIMINARY PLANS FOR
LAUREL ROAD PRELIMINARY DESIGN**
SECTIONS 26, 27, 34, 35 TOWNSHIP 38 SOUTH, RANGE 19 EAST,
SARASOTA, FLORIDA

THIS CONTRACT PLAN SET INCLUDES
ROADWAY PLANS
SIGNAL PLANS

INDEX OF ROADWAY PLANS

SHEET NO.	SHEET DESCRIPTION
1	COVER SHEET
2	PROJECT LEGENDS
3	DEMOLITION PLAN
4-6	DRAINAGE PLAN
7-8	TYPICAL CROSS SECTION
9	GENERAL NOTES
10	MASTER UTILITY PLAN
11	PROJECT LAYOUT PLAN AND PROFILE
12-25	RIGHT OF WAY NEEDS AND OFFSITE POND MAP
26	POND DETAILS
27	PRELIMINARY PONDS (1 AND 2)
28	PRELIMINARY PONDS (3)
29	PRELIMINARY PONDS (4)
30	PRELIMINARY PONDS (4)

GOVERNING DESIGN STANDARDS:
FLORIDA DEPARTMENT OF TRANSPORTATION, FY 2021-21 STANDARD PLANS FOR ROAD AND BRIDGE CONSTRUCTION AND APPLICABLE INTERIM REVISIONS (IRs).
STANDARD PLANS FOR ROAD AND BRIDGE CONSTRUCTION AND ASSOCIATED IRs ARE AVAILABLE AT THE FOLLOWING WEBSITE:
<http://www.fdot.gov/roadway/DesignStandards/Standards.shtm>

GOVERNING DESIGN SPECIFICATIONS:
FLORIDA DEPARTMENT OF TRANSPORTATION, JULY 2020 STANDARD SPECIFICATIONS (AS AMENDED) FOR ROAD AND BRIDGE CONSTRUCTION AT THE FOLLOWING WEBSITE:
<http://www.fdot.gov/programmanagement/Implemented/Specbooks>

LOCATION MAP

NOTE:
THE BENCHMARK DATUM USED FOR THIS DATUM IS NAVD 1985.

ATTENTION IS DIRECTED TO THE FACT THAT THESE PLANS MAY HAVE BEEN ALTERED IN SIZE BY REPRODUCTION. THIS MUST BE CONSIDERED WHEN OBTAINING SCALED DATA. PLANS ARE PLOTTED TO 11" x 17".

THESE PLANS HAVE BEEN PREPARED IN ACCORDANCE WITH AND ARE GOVERNED BY THE STATE OF FLORIDA AND SARASOTA COUNTY DESIGN STANDARDS AND SPECIFICATIONS, EXCEPT WHERE OTHERWISE INDICATED BY SPECIAL PROVISION. THE GOVERNING SPECIFICATIONS SHALL BE: STATE OF FLORIDA, DEPARTMENT OF TRANSPORTATION (FDOT), 2020 DESIGN MANUAL; FDOT JULY 2020 STANDARD SPECIFICATIONS; MANUAL OF UNIFORM MINIMUM STANDARDS FOR DESIGN, CONSTRUCTION AND MAINTENANCE, 2016; MANUAL ON UNIFORM TRAFFIC CONTROL DEVICES AND SARASOTA COUNTY UNIFIED DEVELOPMENT CODE AND ALL OTHER APPLICABLE STANDARDS.

ENGINEER'S CERTIFICATION

I HEREBY CERTIFY THAT TO THE BEST OF MY KNOWLEDGE, INFORMATION, AND BELIEF, THAT THE DESIGN OF THIS PROJECT, AS PREPARED UNDER MY PERSONAL DIRECTION AND CONTROL, COMPLIES WITH THE APPLICABLE PORTIONS OF THE "MANUAL OF UNIFORM STANDARDS FOR DESIGN, CONSTRUCTION AND MAINTENANCE FOR STREETS AND HIGHWAYS" AS ADOPTED BY THE FLORIDA DEPARTMENT OF TRANSPORTATION PURSUANT TO SUBSECTIONS 334.044(10)(g) AND 336.045, FLORIDA STATUTES, THE SARASOTA COUNTY UNIFIED DEVELOPMENT CODE, AND APPROVED ADMINISTRATIVE VARIANCES TO SAID UNIFIED DEVELOPMENT CODE.

ROADWAY PLANS
ENGINEER OF RECORD: _____ P.E. NO.: 57571
BENJAMIN QUARTERMAINE, PE _____ DATE _____

REVISIONS		
DATE	BY	DESCRIPTION

LENGTH OF PROJECT PHASE I		
	LINEAR FT.	MILES
ROADWAY		
BRIDGES		
NET LENGTH OF PROJ.		
EXCEPTIONS		

Stantec
6900 Professional Parkway East, Sarasota, FL 34240
Phone 941-907-6900 • Fax 941-366-1922
Certificate of Authorization #27013 • www.stantec.com

Please email all questions regarding this project to:
laurelroadpublicmeeting@stantec.com

